

# TCHE News

news for the Tri-County Christian Home Educators



And all of thy children shall be taught of the Lord, and great shall be the peace of thy children Isaiah 54:13

## Welcome!

### Fran & Sheri Klaas - chair

Hi! Fran and I would like to welcome everyone to TCHE. Our group is unique in so many ways. We have the best families involved, wonderful kids, motivated parents, and one great big God who leads us. In case you didn't know, our God is an awesome God! If you are still in *I'm not sure what I'm doing* land, or, *I'm not sure I can do this* land, or even, *I am too tired to do this* land - you're right- you can't! But God can! God does know all those things. Lean on Him today, and he will take care of you today, tomorrow and always!

We would like to welcome all of our families back for an exciting new year, and say a big welcome to those joining us. Our group is lead by a leadership of six couples. We'll feature three of them in this issue and feature the other three next month.

We each participate in leading our group in different ways. Fran and I are thankful to once again be privileged to be on Leadership for TCHE. Our job is mostly organizing and facilitating. One of us likes to organize and one of us like to facilitate (which translates into "talk") you figure out who is who. Other things we take care of are scheduling the yearly calendar, leading the leadership group, helping arrange the co-op classes and helping families who have special needs children. Our hope is that our gifts help guide our group with the support that families need. If your family has needs or you know a family that has needs, let us know and we will see if TCHE can help support them. Also, if you have any suggestions for our growing group, we would be the people to contact. It is our sincerest hope that each and every family will rise up and meet some of our volunteer needs. Many of our moms have commented, "Many hands make light the work". Our group is so great. Consider how your family might contribute to help further our cause.



A great time was had at our new location for our annual family picnic- despite the 100+ degree temperature! Thank you all for coming and spending the day with us. A great big thanks to everyone who helped, especially, Greg and Theresa Halmagyi, Rick and Catherine Czerwien, Tracy and Steve Best, and Brad and Stacy Schleifer.

Lastly, I will close by encouraging you all to watch your e-mails and schedules closely. Things change, updates are posted, and time frames are important. Our group is going *high tech*. I know this is difficult for some of us, but it is the most logical way to get information to everyone. Please, before calling, check the organizational chart and check the e-mail updates to see if your answers are there, or check to see exactly who you should call.

We hope every family has a great year. Keep up the good work in your families. Help us support each other and remember Galatians 6:9-10:

*"And let us not get tired of doing what is right, for after a while we will reap a harvest of blessing if we don't get discouraged and give up. That's why whenever we can we should always be kind to everyone, and especially to our Christian brothers."* In Christ, Fran and Sheri Klaas.

### Pete & Sue Brandau - financial

The Brandau family have been members of TCHE for three years. Pete, John and Charlie enjoy sports, hide and seek, and anything which allows for constant movement. Sue, on the other hand, is content to read or scrapbook, but must participate in the activities of life every now and then. We are in our 6TH year of homeschooling and surprised we made it past our third! As treasurer, Sue is responsible for collecting everyone's money... Oh, and of course using it responsibly:) If you have questions regarding membership and co-op registration, fundraising projects label collection, shop & share, etc., or the book fair in May, then call me at 553-3966 or email me at [retepeus@integrity.com](mailto:retepeus@integrity.com). We are happy to serve you and help you in any way we can!

(continued on page 2)

(continued from page 1)

### Pat & Diana Butler- communications

Hello and welcome. We're Pat and Diana Butler and we have been members of TCHE for three years. We have three daughters, Allison-8, Jenna-5, and Jessica- a feisty 2 year old. We handle communications for our group. We bring you TCHE News, our monthly electronic newsletter. We also provide e-mail alerts and updates about upcoming events. Pat manages his own website for his appraisal business so he hosts all of TCHE's communications on his site. If you don't already have this site bookmarked as one of your favorites, do it now! It is <http://www.appraisalservices.com/tchenews.htm>. This is the site where you will find our newsletter, pictures of events, and other important information about our group. This year Pat and I will also be putting our membership directory on our website. Finally, we will be responsible for publicity and advertising.

You will notice from our description, we have a great deal of technology involved with our responsibilities. Some may really like this *push into the techno era* while others may not. What is important to remember is that it is efficient, saves time and money, (a lot of it!), and it makes everything look really good! May God bless you all this coming year.



### Circa Amicas Goes to the State Fair!

The members of Circa Amicas 4H club spent many hours this year writing a script, practicing pantomime and acting, learning to make and work with shadow puppets, and creating sound effects for a story. They performed for the students at Parkview and for their family and friends. As a culmination of all their skills learned, they prepared a display and presentation for the Kendall County Fair. What a busy year! They won Class Champion and were selected to go to the Illinois State Fair...which they did on August 13TH. We'll let you know the results soon.

All of the following members are given a BIG CONGRATULATIONS for their hard work, terrific attitudes, cooperation with others, and willingness to keep going: Bethany Brabo, Joshua Brabo, John Brandau, Bob Burdette, Rachel Burdette, Angeline Czerwien, Natalie Czerwien, Victoria Czerwien, Jennie D'Argento, Joey D'Argento, Katie D'Argento, Johnny DeVries, Kathleen DeVries, Andrea Garrison, Lavinia Garrison, Ruth Garrison, Cody Jones, Bailey Klaas, Payton Klaas, Joseph Krotz, Rebekah Mallette, Michael Mattson, and Hannah Wilczewski.

Hannah Wilczewski won a special award and trophy for her baked Kolachky cookies in the project *Our Food Heritage*. We are proud of you, Hannah, and the other members who entered and won

ribbons for their projects.

### Cloverbuds

Cloverbuds begins on September 12TH at 1:30PM. Cloverbuds is a club for 5-8 year old children. They must be five years old by September 1st. We meet at Plano Christian Church. After September, we will meet on the first Monday of the month, with some extra dates to be announced.

Leaders are, Sheri Klaas and Beth Wilczewski. Call us for any information. We will see you in September. Contact Sheri at (630)553-0317 or Beth at (630)551-0951 for more information.

### Informational meeting

If you'd like more information on 4H or Cloverbuds, we are having a meeting on Tuesday, September 6TH at 6:30PM at Parkview in Yorkville. All those interested as well as continuing members should come to hear what we are doing this year and to sign up for an important job. All parents are encouraged to participate as this is a very family friendly activity! Call Sue Brandau for more information at (630)553-3966 or email me at [retepeus@integrity.com](mailto:retepeus@integrity.com).



### Organizational Chart

The TCHE organizational chart is included on page five of this newsletter. Leadership of our group consists of six couples with diverse yet complimentary talents. We have asked each leader for a two-year commitment. We have also designed the positions to be flexible so that we may easily recruit for replacements at the end of a leadership cycle.

We have designed and are communicating this chart so that TCHE members know to whom they may address their questions or concerns in order to get the answers they need. For example, while Tim and Laura Carlson are responsible for field trips, Ruth Mattson is actually the coordi-

nator for this function. So, if you have a question about field trips, please contact Ruth. She is routinely placing information in the newsletter or sends out e-mail alerts. Another example is that if you have a question about a mom or dad's night out, you would call Sharlavan Robinson. If you have a question about your newsletter or would like to contribute an article, you would contact Diana Butler. These are just a few examples of how this organizational chart is designed to help you.

Our group is growing. Our leadership is taking many calls from prospective members. We are trying to become better organized and would like to serve you, our current members, better. This chart will

help us help you by becoming more efficient in answering your questions. Please consult this organizational chart the next time you have a question or concern and directly contacting the leadership person responsible for the area in which you have a question. Of course, all of leadership is happy to help you with your general questions or concerns.

## Couples Night Out

Our first couple's dinner will be held on August 26<sup>TH</sup> at La Patisserie in Sandwich. If you would like to attend please RSVP with Sharlavan Robinson by calling (630)553-1815 by Monday, August 22<sup>ND</sup>. When you call her you will have to give her your dinner choice, one of the two following:

- 1) Penne pasta with a wine cream sauce mixed with sautéed asparagus topped with crab stuffed mushrooms (\$12.95), or
- 2) Lemon-herb chicken with rice pilaf and a table vegetable trio (\$10.99).

La Patisserie is located at 9 N. Main Street in Sandwich. The evening is set to begin at 7:00 PM. Please join us for an evening designed for adult conversation and fellowship. Don't forget to call Sharlavan by Monday the 22<sup>ND</sup> of August to attend.

### CONTACT INFORMATION

PATRICK BUTLER  
*Newsletter Editor/Publisher*  
 pat@appraisalservices.com  
 (630)897-3339

FRAN & SHERI KLAAS  
*Leadership*  
 (630)553-0317

PETE & SUE BRANDAU  
*Leadership*  
 (630)553-3966

TIM & LAURA CARLSON  
*Leadership*  
 (815)498-4915

DWIGHT & PATRICIA BOWMAN  
*Leadership*  
 (815)695-5025

TONY & SHARLAVAN ROBINSON  
*Leadership*  
 (630)553-1815

PAT & DIANA BUTLER  
*Leadership*  
 (630)844-1259

## Odds and ends...

➤ Jessica Ortega is offering lessons in her home in Sandwich to homeschooling families in the areas of piano, flute, and voice. If you are interested please contact Jessica at (815)786-3161.

➤ Please pray for Theresa Halmagyi and her family in the recent loss of her father.

➤ God's world News is a newspaper for kids that teaches current events from a biblical perspective. It includes teacher's guides with discussion questions and some posters and games. It is published weekly through out the school year. Personally, we have been using these with our children for a couple of years and our kids have learned tons!!!! I sometimes think they get more out of these than some of the other things I use for school. There are four editions: Early Edition- Pre K-1, Taking Off- Grades 2-3, News Current- Grades 4-5, Top Story- Grades 6-9.

They begin sending the issues out in September, so if you are interested, the order information is listed below. If you would like to see some samples, I will have some at the meeting in September. The price is \$21.95 for a single subscription, or \$14.95 for two or more editions sent to your address. The phone number is (800)951-5437 or you can also order online at [www.gwnews.com](http://www.gwnews.com). If you have any questions, don't hesitate to call me— Beth Wilczewski at (630)551-0951.

➤ Creation Expeditions Fossil Hunt Trip - Enjoy camping? Enjoy canoeing? Enjoy being with other like-minded families? How about taking your family on an experience they will remember for a long time... a trip to the Peace River in Florida for a few days of fossil hunting. The family that organizes the trip teaches us about fossils...what to look for, what kind of fossil they are, and then we get the opportunity to find them. We will also share our finds with the other campers. The Brabos have taken the trip and highly recommend it. In fact, they are going again and would like to encourage others to come along. A few families are considering...how about yours? Go to [www.creationexpeditions.com](http://www.creationexpeditions.com) and look for the Peace River trip, March 15-18, 2006 for more details. Or talk to Mike, Carol, Bethany, or Joshua for more information.

➤ The Chicago Toy and Game Convention (CHITAG) is in September this year at Navy Pier. They have an educators program which I've asked them about. So far they've decided not to treat homeschoolers exactly the same as other educators because we don't reach as many children (we don't have 30 children as a general rule) but they will give us something. Homeschoolers get 50% off the admission price (including the family price!) but I think they'll ask for some kind of ID such as a group membership card. They are meeting on Tuesday evening to discuss whether or not to allow us to register to win the Big Box of Games so I'll let you all know.

The convention runs from Friday, September 2<sup>ND</sup> through Sunday, September 4<sup>TH</sup>, 2005. The hours are 4:00 PM until 10:00 PM on Friday, from 10:00AM until 6:00 PM on Saturday, and from 10:00 AM until 5:00 PM on Sunday. Admission per person is \$5.00 a day or \$10.00 for the weekend. The family rate is \$10.00 a day or \$20.00 for the weekend .

Metra has discounted weekend rides and children 12 and under ride free with a paying adult and once you get downtown there's a free shuttle between the train station and Navy Pier. Or there's a discount coupon for the Navy Pier parking garage on the back of your admission ticket. For more information, see their website at <http://www.chitag.com/>

➤ The Aurora Skate Center is offering their homeschoolers' program this year. Here are the details. **Who:** Homeschool children and parents. **What:** Roller skating exercise and skating classes, games and races. **Where:** Aurora Skate Center. See [www.SkateAurora.com](http://www.SkateAurora.com) for map and directions)Skating at the Aurora Skate Center. **When:** Thursdays (beginning September 15<sup>TH</sup>), from 10:00AM to 2:00PM. **Cost:** \$4.00 (includes skates), parents skate free. No pre-registration is necessary, simply show up.

# Upcoming Field Trips

## September-

**Where:** Volkening Heritage Farm in Schaumburg, ILL

**Address:** 201 S. Plum Grove Road in Schaumburg, ILL 60194, (630)552-8809.

**Date:** Thursday, September 15<sup>TH</sup>. Payment is due by August 26, 2005.

**Time:** 9:15 AM sharp! Mail check to Ruth Mattson at 1412 Aspen Ln., Yorkville, IL 60560.

**Cost:** \$4.50 per person age 3 and over.

**Website:** [www.parkfun.com](http://www.parkfun.com)

**Description:** Join us as we explore what farm life was like in the 1880's. At Volkening Heritage farm, you can help with seasonal farm chores, participate in family activities and games of the 1880's or simply visit the livestock and soak in the quiet. Authentically dressed interpreters welcome and guide visitors through the site. Activities will be age appropriate — all ages are encouraged to participate! Some of the activities we may participate in (weather permitting) are baking in the farmhouse, milking the cow, laundry, chicken feeding, corn shelling/grinding, working in the field, loading hay, blacksmithing, and gardening. All ages welcome, however, no strollers in the farmhouse please!

Payment is due by August 26<sup>TH</sup> (Ruth will be on vacation after that—if you want to post date your check it will not be cashed until September 13<sup>TH</sup>). Please note that if your payment is not received by August 26<sup>TH</sup>, I will allow last minute people to sign up if they are willing to pay. The maximum number of people allowed at this event is 70, and we have 54 signed up already, so *please make sure you mail your check!* There are no refunds for this event if you do not attend. The more people who pay for this event, the more activities our children will be able to participate in! At the current number, we may participate in 6 activities. If we go up to 70 people, we will participate in 7 activities.

## October-

**Where:** Yorkville Water Treatment Facility

**Date:** Wednesday, October 12, 2005

**Time:** 1:30 PM.

**Description:** We already have the maximum number of individuals signed up for this event. If you still wish to attend, I may be able to set up a 2<sup>ND</sup> tour. Please contact me if you wish to be put on a list for this tour.

## November- (for older students)

**Where:** The Billy Graham Center Archives at Wheaton College.

**Date:** November 1, 2005.

**Time:** 9:30–11:30 AM.

**Description:** Celebrate All Saints Day by taking your kids on an adventure of Christian history! Bypass books and let your children read the original documents! The Billy Graham Center Archives, located on the campus of Wheaton College, contains a wealth of information on missions, church history, and life in different countries. In the Archives you'll find firsthand accounts of many of the major religious, political, social and military events in the nineteenth and twentieth centuries.

On November 1, 2005 from 9:30–11:30 AM, a special session for parents and children (ages 11 and up only) will be held at the archives. During their visit, the children will learn about the Archives through a presentation that includes many unique and interesting documents, tapes, videos, photographs, etc. Children will go on a *treasure hunt* and discover such things as how a Civil War soldier felt before the Battle of Gettysburg, how prisoners of war at the end of World War II obtained supplies, and listen to a phonograph record without the use of electricity. There will be a time allotted for parents to discuss with Archives staff how to utilize the Archives for future course work. This is truly a golden opportunity for our children to have access to such quality historical items for learning and research!

The session is limited to 15 children, and there is no fee. However, if you sign up, please make sure you attend! TCHE has been embarrassed in the last few years because members have signed up and not shown up for free events when we have

commissioned people's time and resources to teach our children! Remember, we represent home schooling to the outside world — let's not prove to them that we are an irresponsible lot who are not properly educating their children!

Please call or e-mail Ruth Mattson at (630)552-8809 or [rmattson@invtools.com](mailto:rmattson@invtools.com) to sign up. Since we are not the only homeschooling group The Billy Graham Center is inviting, you should plan to sign up quickly! If we have an overwhelming response, we may be able to get our own session scheduled for another day.



## Newsletter tidbits

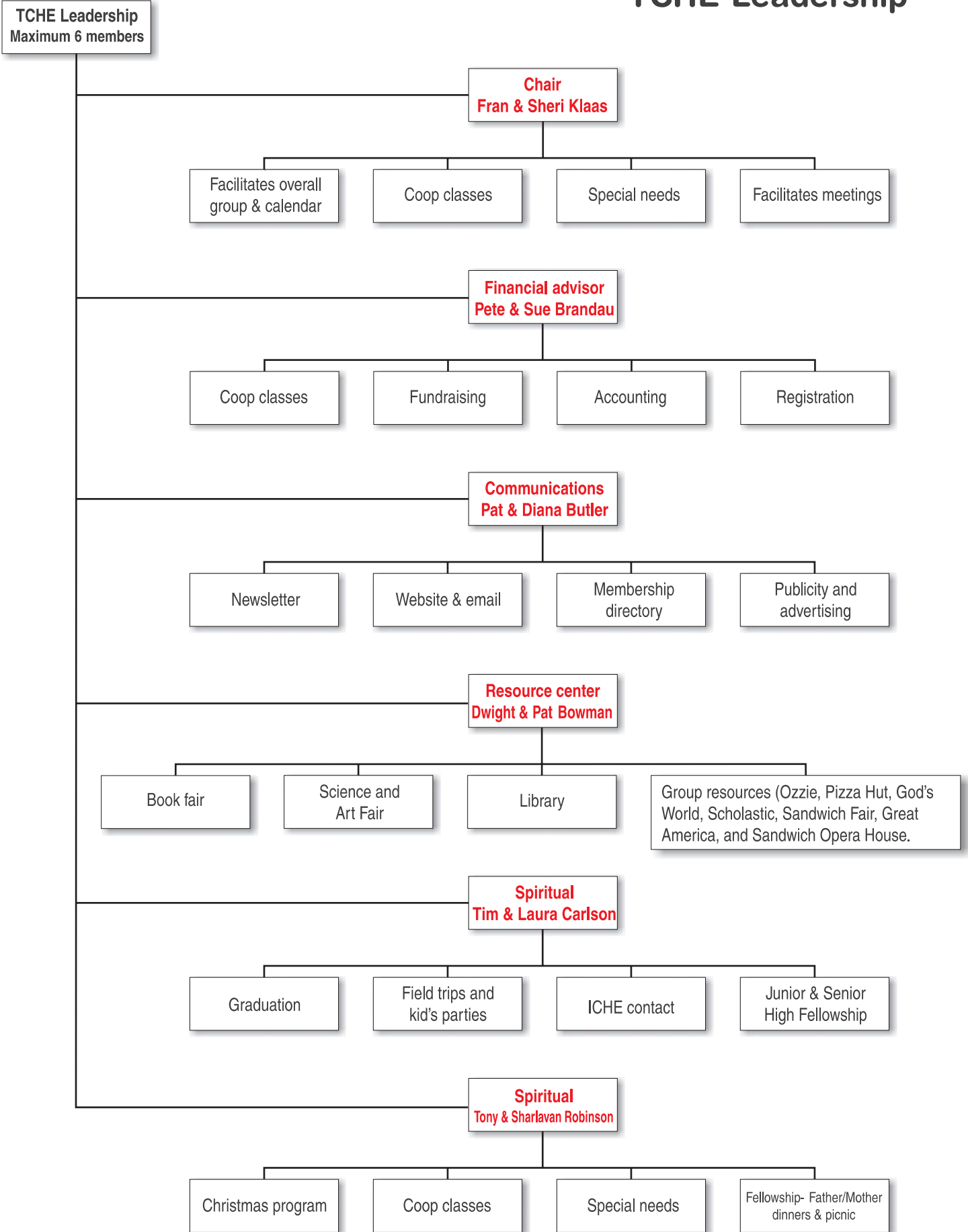
We can still use photos for the newsletter from any members who attend TCHE events. I try to take as many pictures as I can, but I don't attend every TCHE event. Even if you just take one or two quick photos, that's all we need to accompany any article about your event.

The deadline for each issue is the 25<sup>TH</sup> of each month. However, please feel free to contribute any information you have as early as possible. It allows us to have a little more time to gather additional information and/or get photos to accompany the article.

## TCHE News

307 Boulder Hill Pass  
Montgomery, IL 60538

# TCHE Leadership



All take inquiries from prospective members